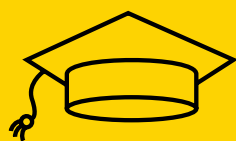


Hands-on learning  
for the future of  
automation

# FANUC

## Educational Package



# Robotics expertise for schools and universities

## All the core skills contained in a dedicated package

At FANUC, we're passionate about automation. Contributing massively to manufacturing efficiencies, automated solutions drive productivity, enhance quality and minimise costs.

Given the exciting future facing the industry, we're also passionate about education. That's why we've put together the FANUC Educational Package. Designed with students in mind, it enables young people to gain first-hand experience of programming and operating cutting-edge industrial robots. Package content is highly relevant for modern factory applications and contains everything instructors require for teaching purposes.



**FANUC**   
EDUCATIONAL  
PACKAGE

## ACADEMIC PACKAGE 1

### Robot:

- FANUC LR-Mate 200iD/4S
- 6-Axis Mechanical Robot
- Payload: 4 kg
- Reach: 550 mm



### Includes:

- 30iB Compact Mate Controller
- LR Handling Tool Software
- Material Handling iPendant with Touch Screen
- Standard 28 Digital Inputs/20 Digital Outputs
- 7 metre Robot/Controller Connection Cable

### Education software bundle:

- Collision Detection
- DCS Position/Speed Check
- DCS Safe I/O Connect
- Motion Optimisation
- Constant Path
- Program Shift
- Multi Tasking
- FTP Interface
- Condition Monitor
- High Speed Skip



### Instructor training:

- Everything instructors need to know in order to teach students how to operate a robot.



### PC simulation software for students:

- 20 licences for ROBOGUIDE simulation software



## ACADEMIC PACKAGE 2

### Academic Package 1

- + FANUC 2D Integrated Vision

## ACADEMIC PACKAGE 3

### Academic Package 1

- + Lightweight Alu Robot Frame

## ACADEMIC PACKAGE 4

### Academic Package 1

- + FANUC 2D Integrated Vision
- + Lightweight Alu Robot Frame
- + Schunk electric gripper



**Push  
the  
button**



MFL-02386-EN

**Why choose FANUC?** Because FANUC produces the widest range of industrial robots in the world, as well as a vast range of dedicated solutions for motion applications. With 400,000 units installed worldwide, FANUC robots are found in factories and production facilities everywhere.

We reserve the right to make technical changes without prior announcement.  
All rights reserved.

©2015 FANUC Europe Corporation

**[www.fanuc.eu](http://www.fanuc.eu)**